

2022 ANNUAL REPORT

The Community Foundation



THE COMMUNITY
FOUNDATION

building a greater saint john



Sistema NB Saint John Centre's advanced bassoon section leaving the stage post-performance

Reflections from the Chair

I am honored to have been appointed as the Chair of the Community Foundation Board of Directors for 2023.

As a member of the board for almost seven years, I understand how important the work of the Foundation is to Greater Saint John. I have seen it firsthand and that is what led myself and my wife Andrea to create two permanent endowment funds with the Community Foundation.

The first fund is The Jacob Keeley Brown Fund, in memory of Andrea's brother. Jacob's Fund supports the ongoing maintenance of Long Island, located in Kennebecasis River, a place Jacob loved.

The second fund, The Andrea and Heinz Schaerer Fund, equally supports the Boys' and Girls' Club of Saint John and Long Island.

Despite the economic and global market challenges in 2022, we continue to thrive. Our 2022 donation total was \$1,451,277. We disbursed \$2,620,457 in grants to local charitable organizations and students in Greater Saint John.

What an incredible year! We know that none of this is possible without the leadership of our board and committee members, the dedication of our staff, the incredible hard work of the charitable organizations we serve and the generosity of our donors.

With Gratitude,



Heinz Schaerer, Chair



HEINZ SCHAERER, CHAIR



Reflections from the President & CEO

Working with donors to understand their vision and creating a fund that is truly reflective of that vision, is one of the most rewarding things we do.

During 2022, five new permanent endowment funds were established. The family of Allan Percival Smith established a fund to honour his memory and provide bursaries to graduates from Rothesay High School pursuing engineering.

The Gentle Path Judy Urquhart & Joyce Gregg Co-Founders Fund supports the operations and clients of the Gentle Path Inc.


The D.A.R.E. (Drug Abuse Resistance Education) Fundy Fund supports charitable organizations that provide substance abuse/addiction programming to children and young adults in the Greater Saint John area.

The Social Innovation Legacy Fund provides resources to support innovative practices and approaches to address generational poverty.

The Nagaraj Family Fund was established give back to the community that has given so much to this generous family. It funds bursaries to Saint John High School graduates as well as supports other charitable purposes.

Together, we are creating a vibrant community where everyone belongs.

With sincere thanks for your investment and trust,



Kelly Evans, President & CEO



KELLY EVANS, PRESIDENT & CEO



THE COMMUNITY
FOUNDATION

building a greater saint john

our mission

To serve as a trustee of gifts, support charitable organizations and inspire community leadership.

our vision

To ensure a sustainable future and improve the quality of life in Greater Saint John.

Photo provided by Inclusion NB.
Families United Project Participant

1. Donor

Anyone can be a donor and contribute a gift, small or large, to a Community Foundation.

2. Donor Engagement

Community Foundations and donors work together to realize their philanthropic goals, matching their interests and community needs.



6. Community Impact

The Community Foundation invests in many ways - grants, building partnerships and pooling knowledge, resources and expertise to stimulate ideas and strengthen communities.



Giving to Your Community Foundation

3. Make a Contribution

Community Foundations work with the donor to establish a new endowment fund or give to an existing fund.



5. Grants

The Community Foundation distributes grants to all corners of the community in arts and culture, education, health, social services, and the environment.



4. Investment

The donor's gift is pooled with a Community Foundation's endowment assets, invested through careful stewardship and income is used to make grants.



Why Contribute to a Community Foundation?



Community Knowledge

A deep understanding of local needs and opportunities



Expertise

Community Foundations are credible stewards of assets and granting expertise.



Leadership

Community Foundations are led by a volunteer board of directors comprised of knowledgeable community leaders

2023 Board of Directors



Heinz Schaerer,
Chair



Kristin Ross,
Vice-Chair



Cathy Fawcett,
Secretary



Matthew Snelgrove,
Treasurer



Tracy Friars,
HR Lead



Jennifer Brown



Judith Brown



Robert Crowley



Mike Duncan



Haiping Fu

YOUR COMMUNITY
MAKES YOU.
AND YOU MAKE
YOUR COMMUNITY.



Duncan Webster



Fraser Wells



Andrew West



Cathy Wright



2022 Board of Directors and staff visit grant recipient Saint John Jewish Historical Museum

*”Volunteers do not necessarily have the time;
they just have the heart.”*

2023 Committees

Impact Measurement & Evaluation Committee

Robert Crowley (Chair), Kristin Ross, Cathy Fawcett, Tracy Friars, Heinz Schaerer, Jennifer Brown

Nomination Committee

Kristin Ross, Tracy Friars & Heinz Schaerer

Finance Committee

Matthew Snelgrove (Chair), Kristin Ross, Cathy Fawcett, Mike Duncan, Heinz Schaerer, Tracy Friars

Executive Committee

Heinz Schaerer (Chair), Cathy Fawcett, Mike Duncan, Matthew Snelgrove, Kristin Ross, Tracy Friars

Community Investment Committee

Kristin Ross (Chair), Fraser Wells, Judith Brown, Cathy Wright, Mike Duncan, Haiping Fu, Noah Ritcey, Andrew West, Justin Sweeney, Duyen Nguyen, Alex Ash, Jasmine Seeley Laila ElBaghdadi, Steve Oshai, Michelle Thibodeau-Coates

Staff



Cindy Floyd, Sarah Frauley, Kelly Evans, Carrie Tanasichuk, Harry Daley, Trisha Erb, Claire Ashton

2022 Financial Highlights

*A full set of audited financial statements can be found on our website:
<https://thecommunityfoundationsj.com/about/reports/>



	<u>2022</u> <i>(12 month)</i>	<u>2021</u> <i>(12 month)</i>	<u>Nov - Dec</u> <u>2020</u> <i>(2 month)</i>	<u>Nov 2019 - Oct</u> <u>2020</u> <i>(12 month)</i>
Assets	\$20,325,754	\$21,774,651	\$20,460,978	\$19,120,723
Revenue				
Donations to the Foundation	\$1,451,277	\$606,998	\$595,399	\$208,686
Grants from External Funders for Distribution	\$1,944,242	\$1,972,004	\$152,740	\$2,398,276
Investment Income	\$369,673	\$336,246	\$359,293	\$725,269
Administration Fees	\$714,146	\$716,090	\$109,148	\$94,469
Realized Gain on Disposal of Investments *	-\$207,453	\$3,180,319	\$55,683	\$156,312
Covid Subsidies	-	-	-	\$47,670
Total Revenue	\$4,271,885	\$6,811,657	\$1,272,263	\$3,630,682
Expenditures				
Grants awarded to local charities	\$2,620,457	\$2,267,121	\$462,240	\$2,427,796
General Support Expenses	\$1,355,562	\$1,376,867	\$211,790	\$704,695
Total Expenditures	\$3,976,019	\$3,643,988	\$674,030	\$3,132,491
Net Surplus/(deficit)	-\$2,310,505	\$1,696,363	\$1,484,157	(\$196,072)
Fund Balance at Year End	\$19,278,071	\$21,588,576	\$19,892,213	\$18,408,056

*In December 2021, The Community Foundation transitioned to a new Investment Manager.

Community Impact Grants 2022

**Formerly known as 'Smart and Caring' Grants*

The Resource Centre for Youth
I-Click Photography Project
\$25,000

Boys and Girls Club of Saint John Inc.
South End Community Centre Education
Hub: Tech Lab
\$25,000

Sophia Recovery Centre
Sophia Connections: Empowerment &
Community Engagement
\$25,000

Saint John Learning Exchange
Social Enterprise Coordinator
\$25,000

Saint John Learning Exchange
Driver Training
\$10,000

Waterloo Village Neighbourhood Association & P.U.L.S.E
Access to Primary Health Care and Improved Food Security Outcomes Project
\$25,000

The Resource Centre for Youth
Alumni Relations Program
\$25,000

Royal United Services Institute
The NB Naval Memorial
Digital Storytelling
\$25,000

Saint John Theatre Company
The Loyalist Burial Ground Project
\$25,000

The ONE Change Inc.
ONE Youth Coordinator
\$25,000

Canadian Rugby Federation
Trojans R.F.C - Trojan House
Community Centre
\$25,000



DRUMS ACROSS CANADA

\$15,135 Grant



Community Impact Grants 2022

**Formerly known as 'Smart and Caring' Grants*

New Brunswick Youth Orchestra
Sistema NB
Saint John 2022 Bassoon Program
\$25,000

Outflow Ministry Inc.
Client Responsive Housing
\$25,000

Youth Enhancement Program Inc.
Healthy Smoothie Program
\$3,000

Crescent Valley Resource Centre
The Growing Place Community
Garden & Greenhouse
\$25,000

Interaction School of Performing Arts
Digital Toolkit for the Performing Arts
\$21,400

Dr. Christine Davies Education Centre/First Steps Housing
Driving Change 2022
\$7,061

Chroma NB
Rainbow Connections: Supporting 2SLGBTQIA+ Youth & Families in Our
Community-**\$23,310**

NB COPES LTD
Camp COPES Retreat for Youth
\$9,850

NB COPES LTD
Healing Hearts for Grieving Parents
\$9,720

Saint David's United Church
Food for the Journey Meal Program
\$25,000

Saint John Jewish Historical Museum
Learning about the Holocaust
\$3,250

Inclusion NB
Families United Saint John Project
\$15,149.17





PALS IN THE PARK

\$16,500 Grant



Photo provided by Lily Lake Pavilion.

Bursaries 2022

WE AWARDED 60 BURSARIES TO STUDENTS IN GREATER SAINT JOHN TOTTALLING OVER \$165,000.

These bursaries were awarded from the following funds:

The Allan Percival Smith Memorial Fund, The Barbara and Don Ring Memorial Bursary Fund, The Belleisle Valley Health Centre Scholarship Fund, The Bill Gale Bursary Fund, The CFUW-Saint John Scholarship Fund, The C.N. Wilson Fund, The Cheryl M.G. Robertson Bursary Fund, The Constable Doug Larche Memorial Bursary Fund, The Constable Royce Isenor Memorial Scholarship Fund, The Cook Family Fund, The Daniel F. Johnson Memorial Scholarships in History Fund, The David 'DK' Kelly Memorial Bursary Fund, The Dr. Eli Davis Memorial Fund, The Dr. J.P. & Anita McInerney Fund, The Dr. Malcolm M. Somerville Bursaries in Business Fund, The Elmer and Jean Thompson Family Bursary Fund, The Garfield T. Meltzer - Jewish War Veterans Scholarship Fund, The Gregory J. Bangay Memorial Bursary Fund;



**Jonah Sisco (St. Malachy's Memorial)
The Joshua Porter Gunn Bursary**



**Owen Sutherland (Saint John High School)
The Elmer and Jean Thompson Family Bursary**



**Ashton Hanson (Rothesay High School)
The Jim Connolly Bursary**

Bursaries 2022

The Jack, Lois & Cindy Kidd Bursaries Fund, The Jim Connolly Bursary Fund, The John Kelly Recreation Bursary Fund, The Joseph Sarto Hickey Carpentry Bursary Fund, The Joshua Porter Gunn Bursary Fund, The Juanita L. Black Bursary Fund, The Milton & Patricia Bassen Bursary Fund, The Naval Memorial Fund, The Old Ladies Home of Saint John Fund, The Rachael Dawn Duffley Memorial Scholarship Fund, The Robert MacMurray Memorial Bursary Fund, The Rothesay High School Alumni Bursary Fund, The Saint John Country Music Week Legacy Fund, The Suzanne Doyle-Yerxa Award Fund, The Walter & Joan Flewelling Fund.



**Hussein Khaled Alali (St. Malachy's Memorial)
The David 'DK' Kelly Memorial Bursary**



**Elijah Lyons (Harbour View High)
The Juanita L. Black Memorial Bursary**



**Cecilia Hooper (Belleisle Regional High)
The Rachael Dawn Duffley Memorial Scholarship**



The 2022 Gregory J. Bangay Memorial Bursary was presented to First Steps graduate, Jamie Luis Madsen (pictured with her daughter Katerina) by Brenda and Donald Bangay in memory of their son Gregory.

Jamie is currently studying at NBCC to become an Autobody and Collision Technician. This is a long-time passion of hers.



Leave a Legacy

Some people already have a good idea where they would like to donate their money. There is also a surprising number of generous people who just want to give where it's needed most. They want to give back and strengthen the community they love as part of their financial or estate plan.

Either way, we'd like to make it easy for you to invest philanthropically in a way that isn't a "one time gift and it's gone". The endowment approach invests your initial capital donation. Profit from your original investment is gifted every year forever, to charities doing fantastic work.

Start a Fund

Establishing a fund with our community foundation is simple and effective. The GSJ Community Foundation takes care of all the administration work so you can focus fully on your charitable interests.

Give Monthly

Monthly giving is such an important and rewarding way to show your support for the fund closest to your heart. As a recurring donor, you'll be part of the fabric of The Community Foundation, playing a direct role in growing your chosen fund. You're truly part of the team.

The Allan Percival Smith Memorial Bursary Fund

New Fund:

ESTABLISHED 2022

Allan Percival Smith was the beloved husband and best friend of Clare Smith. She and her family wish to honour his memory by establishing a permanent endowment in order to provide one or more bursaries to be awarded annually to graduates from Rothesay High School who are pursuing post-secondary education in the field of engineering.

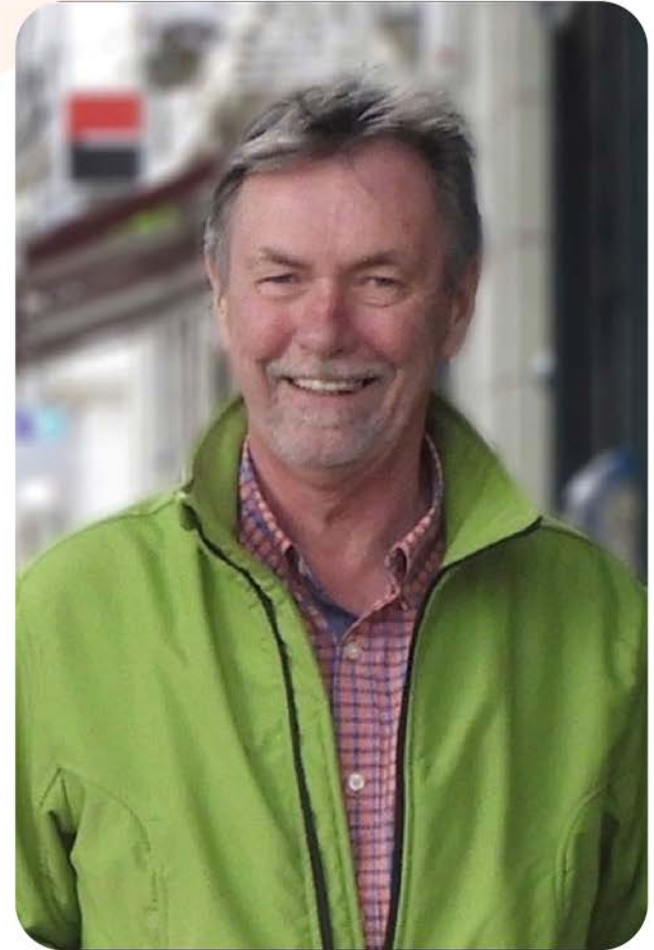
Allan grew up on the Clark Road in the town of Fairvale/Rothesay where he formed many lifelong and lasting friendships. He attended NBCC and began his Civil Engineering Career as a Technologist in 1974. He joined the City of Saint John Municipal Operations in 1989 and worked there until retirement.

Allan was an avid bridge player, chess player and long time curler at Thistle Saint Andrews Curling Club, where he was on the board of directors.

He had a great love for his family, music, his Island cottage and his dog!

Allan was very active in his Church community where he served as a Warden at Trinity Anglican Church and was a part of a small group who had a major leadership role in the renovation of the Trinity Church School House Hall. He was honoured to help create and participate in the Parish Nursing Outreach Program at Trinity. In later years, he returned to his beloved Parish of St. Paul's in Rothesay to participate in Parish life.

Allan was a man who loved to learn and valued the importance of knowledge. This bursary honours his memory and his commitment to helping provide local youth with the opportunity for advanced learning and a brighter future.



ALLAN PERCIVAL SMITH

New Fund: The Gentle Path Judy Urquhart & Joyce Gregg Co-Founders Fund

ESTABLISHED 2022

Gentle Path Counselling Services is a social enterprise and registered charity that seeks to provide group and individual professional mental health services to everyone, regardless of their means to pay.

The agency started as a venture by two professionals who left their secure social work jobs in order to provide counselling and group mental health services to those ignored or disheartened by the lack of available resources in the Saint John region. Judy Urquhart and Joyce Gregg established Gentle Path Counselling Services in 1988.

Joyce retired in 2001 and passed away on June 24, 2016 while Judy continued to serve as a counsellor and Executive Director of Gentle Path until 2020 and she died on October 5, 2021. The new fund is a lasting legacy and tribute to the co-founders.

Gentle Path wanted to create a permanent endowment fund to support the future of its operations and clients. They are proud of the work they do and are committed to offering Saint John, and all surrounding areas, a safe space to share, learn, and grow with hope and healing opportunities for everyone.

JOYCE GREGG, GENTLE PATH CO-FOUNDER



JUDITH URQUHART, GENTLE PATH CO-FOUNDER



New Fund: **The Nagaraj Family Fund**

ESTABLISHED 2022

Dr. Subbarao Nagaraj and Padma Nagaraj were residents of the City of Saint John for over 47 years. Their son Vikas Nagaraj and daughter Seema Nagaraj were born and raised in Saint John and are graduates of Saint John High School.

In 2022, the Nagaraj family established a fund to support the community that has given so much to them, 'The Nagaraj Family Fund.'

The annual income from this permanent endowment fund will support bursaries for students that are graduating from Saint John High School and will also support other charitable purposes in the Greater Saint John community.

New Fund: The D.A.R.E. Fundy Legacy Fund

ESTABLISHED 2022

The Drugs Awareness Resistance Education (D.A.R.E.) program was established in 1999. The police officer-led series of lessons taught children and young adults how to resist peer pressure and live productive drug and violence-free lives. As programming needs changed, the D.A.R.E. Fundy Chapter was dissolved in 2022.

In order to continue to provide support to the community, the chapter created the D.A.R.E. Fundy Legacy Fund. It was established to support charitable organizations that provide substance abuse and addiction services, programs or related activities for the benefit of children and young adults in the Greater Saint John area.

New Fund: The Social Innovation Legacy Fund

ESTABLISHED 2022

The Social Innovation Fund was created by the Province of New Brunswick to experiment, innovate and test new initiatives to help end generational poverty in Saint John. Through the Grantee Partners, significant progress has been made with the implementation of meaningful innovations and many have demonstrated the need for systems and policy changes.

Some projects are completed while others are close to fruition. Impact measurements are underway. The government commitment for funding support will soon expire.

To build on the success of the Social Innovation Fund, the Community Foundation has established the Social Innovation Legacy Fund. The board-established fund will continue to address generational poverty in Greater Saint John by supporting projects, initiatives and activities focused on innovative practices and approaches to address generational poverty in Greater Saint John.



Pictured:
Social Innovation Fund projects are showcased at the Community Foundation's 2022 Annual Impact Showcase on May 5, 2022.

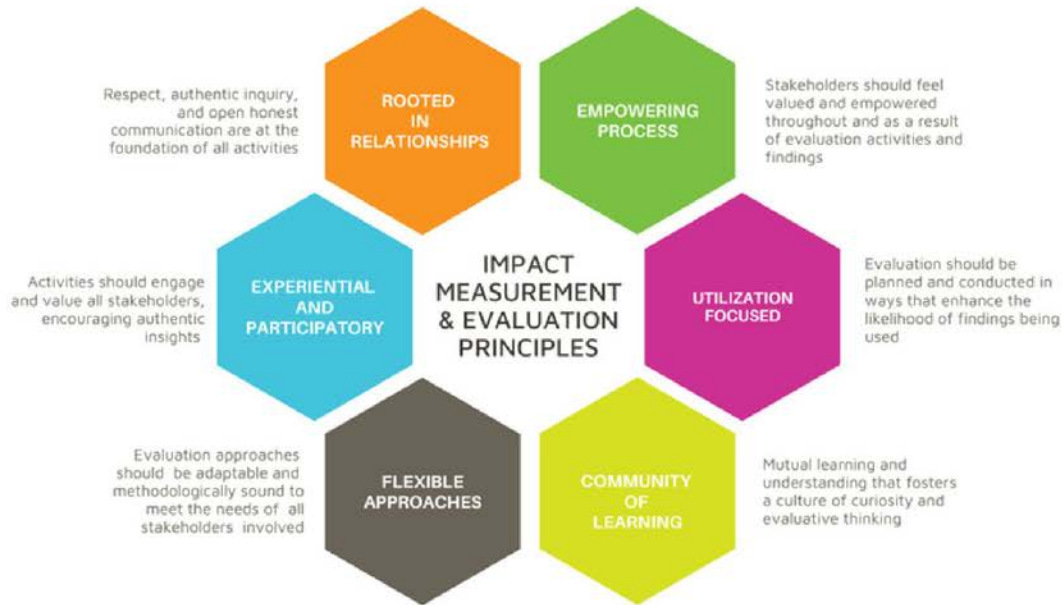


Impact Measurement & Evaluation

The Greater Saint John Community Foundation's Impact & Evaluation branch works to support and build evaluation capacity within non-profits, charities, and social purpose organizations working to improve the quality of life in our community.

These principles guide our approach to evaluation planning, coaching, capacity building, direct support, and impact measurement.

We seek to collaborate at all stages, enhancing the capacity of your organization to realize its full potential.



Services we offer:

- Coaching & Training
- Evaluation
- Strategic Planning
- Tool Design



EXPERIENTIAL
AND
PARTICIPATORY

EMPOWERING
PROCESS

UTILIZATION
FOCUSED

COMMUNITY
OF
LEARNING

FLEXIBLE
APPROACHES

IMPACT
MEASUREMENT
AND
EVALUATION
PRINCIPLES

ROOTED
IN
RELATIONSHIPS



'Evaluating Your Impact'

Class of Fall 2022

THE COMMUNITY
FOUNDATION
building a greater saint john

VitalSigns.

The Vital Signs report is part of the Community Foundations of Canada national initiative presenting local data to the health and vitality of communities.

Vital Signs enables the foundation to understand community needs, target grant funding, and measure progress on priority areas using a values framework.

Ellen Taylor
Crescent Valley Resident

**Vital
Conversation**



COMMUNITY
FOUNDATIONS
OF CANADA

VitalSigns.



COMMUNITY
FOUNDATIONS
OF CANADA

The Greater Saint John
Community Foundation's Vital
Signs work began in Winter of
2022 and the report is
anticipated to be released in
December of 2023.



55+ citizens of Crescent Valley gather for a Vital Conversation about what dreams they have for their community, what services they use and what's missing that could make life more full, healthy, safe and enjoyable.

VitalSigns.

The Ukrainian Welcome Fund



The initial cheque presented to the YMCA Newcomer Connections Program for the Ukrainian Welcome Fund, which was a partnership with the United Way Serving Saint John, Kings, and Charlotte, The Greater Saint John Community Foundation, TD and The Chamber Saint John Region. The final total raised was \$52,000 thanks to many generous donors and this money was used to provide basic necessities for newcomers to Saint John, such as toiletries and medical prescriptions.



THE COMMUNITY
FOUNDATION
building a greater saint johns

thank you

to our donors and fundholders.
It starts with you.



Photo provided by The Resource Centre for Youth
Alumni Project Participants



THE COMMUNITY
FOUNDATION

building a greater estia

CONTACT US

The Greater Saint John Community Foundation
PO Box 20061, Brunswick Square
Saint John, NB E2L 5B2

Phone: 506.645.1675

E-mail: info@sjfoundation.ca

Website: www.thecommunityfoundationsj.com

